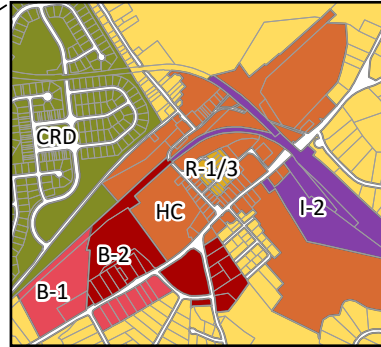
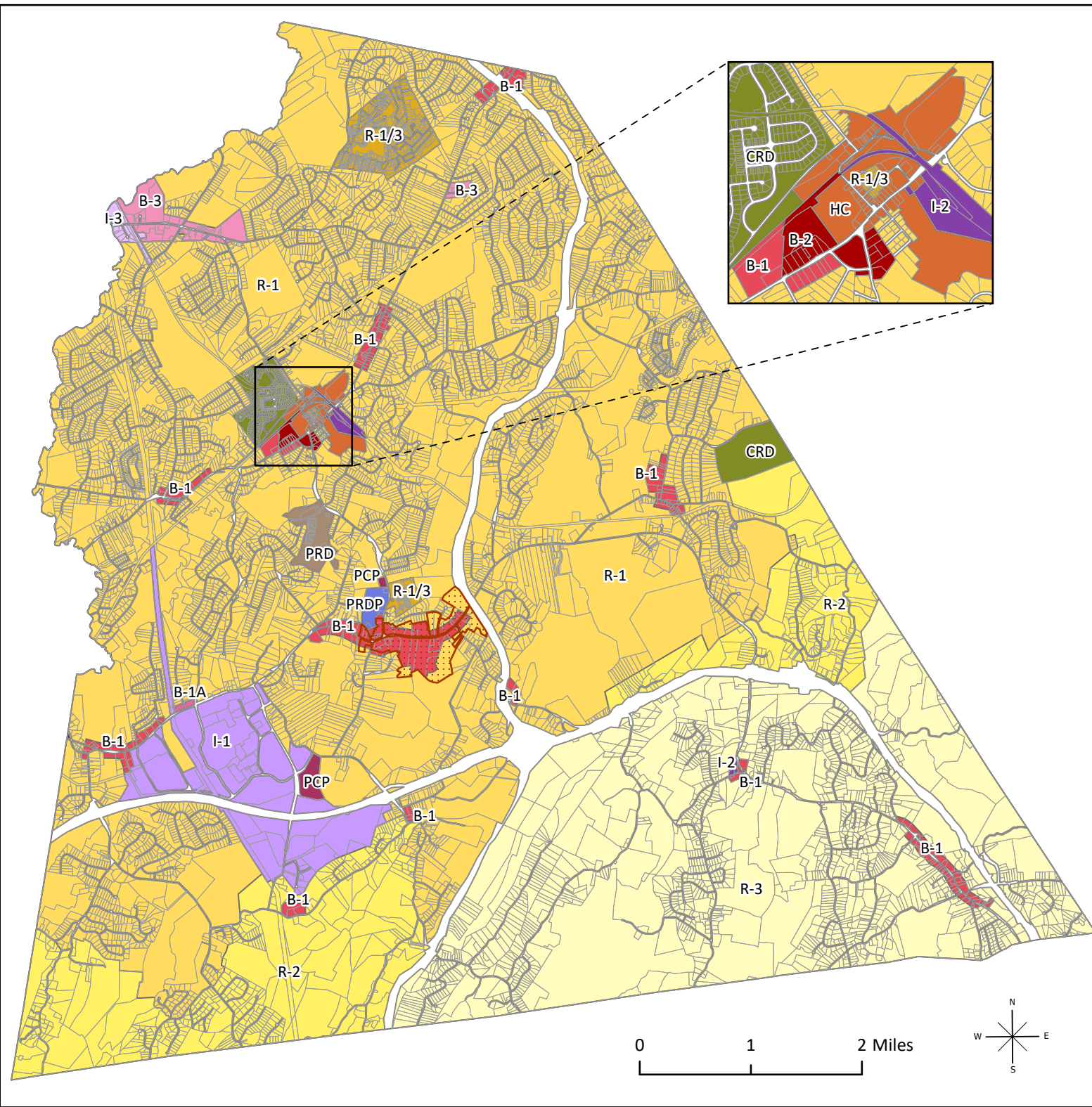


Town of East Fishkill Zoning Map



Legend

- Parcels
- Zoning Districts**
- B-1 (General Business)
- B-1A (Transitional Business)
- B-2 (Central Business)
- B-3 (Mixed Use)
- CRD (Conservation Residential District)
- HC (Hamlet Center)
- I-1 (Light Industrial)
- I-2 (Heavy Industrial)
- I-3 (Light Industrial/Retail)
- PCP (Planned Commercial Development)
- PRD (Planned Residential Development)
- PRDP (Planned Research and Development Park)
- R-1 (Residential 1 Acre)
- R-1/3 (Residential 1/3 Acre)
- R-2 (Residential 2 Acre)
- R-3 (Residential 3 Acre)
- TPOD (Taconic Parkway Overlay)

Map prepared by the Dutchess County Department of Planning and Development based on information supplied by the municipality.

On August 24, 2023, by official action of the Town Board, the following changes were made in the Official Zoning Map: the B1-A Zoning District, the B-3 Zoning District, the Hamlet Center District, and the Taconic Parkway Overlay District were added to the map.

Peter Cassidy

Town Clerk
Peter Cassidy

